

# Indian Institute of Technology Kanpur

Environmental Engineering Laboratory

Department of Civil Engineering

**Dr Purnendu Bose**

*Lab In-charge*

Date: June 27, 2022

**Enquiry date: June 27, 2022**

**Enquiry No: IITK/EEM/2022-23/02**

Sealed quotations are invited from the Furniture Suppliers / Carpentry Work Firms / Interior Designers and Fabricators for fabrication and supply of following Office Furniture for Outreach Office, cGanga at East of Kailash, New Delhi.

### Details of required Items

S.No.	Specifications	Quantity (In No.)
1.	<b>Conference Table</b> <ul style="list-style-type: none"><li>• Size: 4 ft x 12ft</li><li>• Sitting Capacity: 12</li><li>• Material (Structure): Teak Wood</li><li>• Material (Tabletop): Laminated panel</li><li>• Electrical sockets (12 No.s)</li><li>• Natural Polish</li><li>• Representative Drawing: Refer Annexure 1</li></ul>	01
2.	<b>Working Platforms (PC)</b> <ul style="list-style-type: none"><li>• Size: 4' x 1'-6" x 2'-6" (LxWxH)</li><li>• Sitting Capacity: 02</li><li>• Material: Laminated Plywood</li><li>• Electrical Switch/Sockets: 04 No.s</li><li>• Representative Drawing: Refer Annexure 2</li></ul>	04
3.	<b>Book Shelves / Room Partitions</b> <ul style="list-style-type: none"><li>• Size: 10' x 14" x 7' (LxWxH)</li><li>• Material: Laminated Plywood</li><li>• Representative Drawing: Refer Annexure 3</li></ul>	02
4.	<b>Digital Screen Platform with Drawers</b> <ul style="list-style-type: none"><li>• Size: 14' x 2'6" x 2'-6" (LxWxH)</li><li>• Material: Laminated Plywood</li><li>• Representative Drawing: Refer Annexure 4</li></ul>	01
5.	<b>Computer Tables (L-Shape)</b> <ul style="list-style-type: none"><li>• Size: 3' x 2' x 2'-6" &amp; 4' x 2' x 2'-6"</li><li>• Material: Laminated Plywood</li><li>• Representative Drawing: Refer Annexure 5</li></ul>	02
6.	<b>Miscellaneous Polish and Painting</b> <ul style="list-style-type: none"><li>• Rates to be quoted in PerSqFt</li></ul>	-

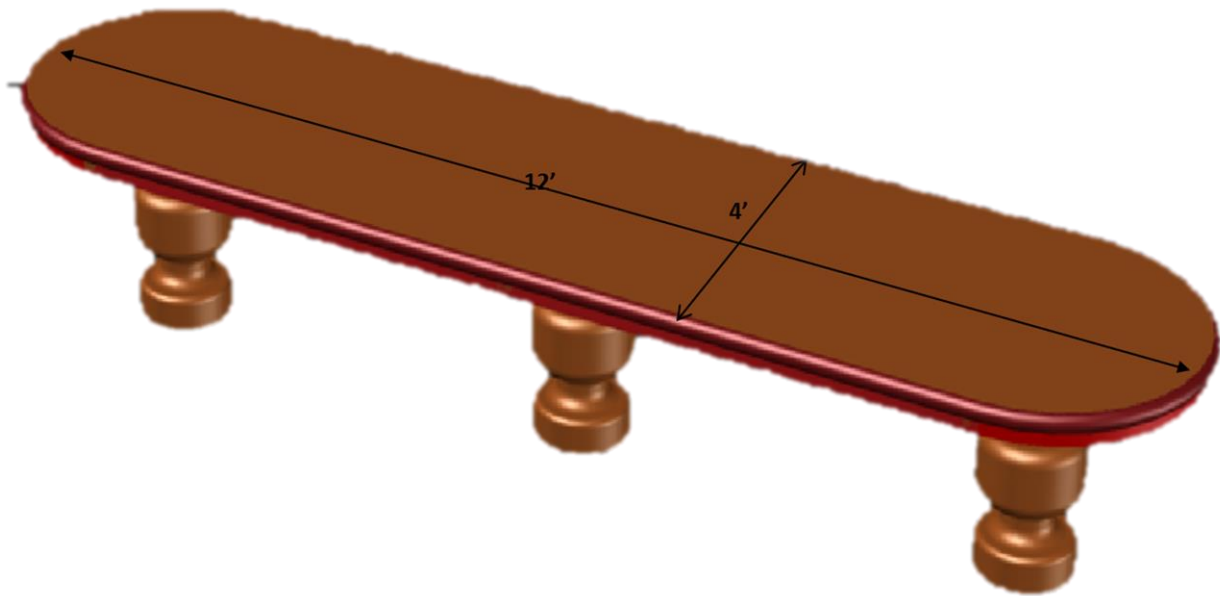
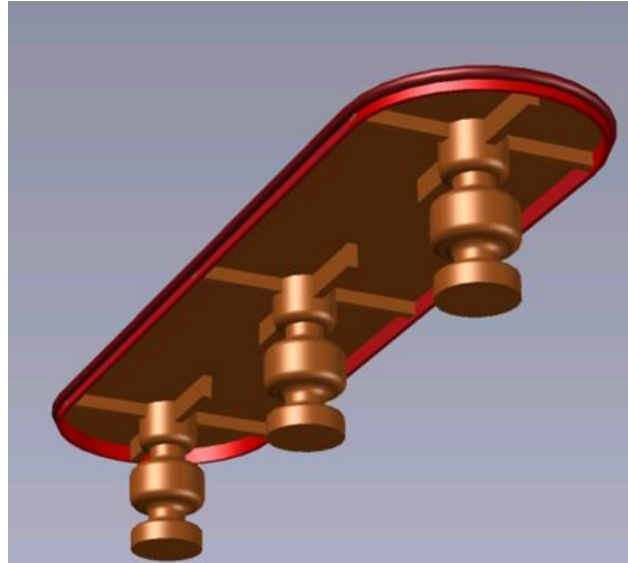
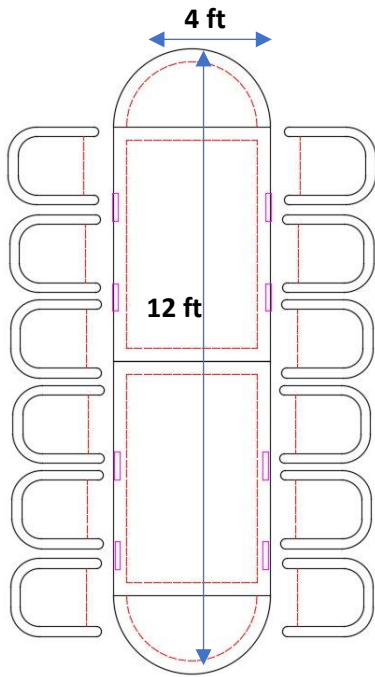
**Delivery Schedule:** The mentioned job is to be completed within 21 days from the receipt of Work-Order.

#### **Note:**

1. Bidders are advised to visit the institute during office hours to see the quality and standards of required furniture before submitting the bid.
2. Preference will be given to Carpentry Firms willing to work On-Site (i.e. cGanga Outreach Office at East of Kailash, New Delhi)
3. Pictures shown in annexure are indicative

# Annexure 1

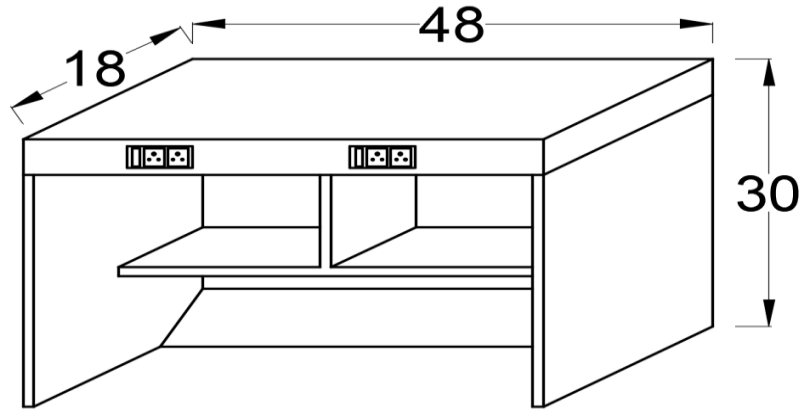
## Conference Table



**Annexure 2**

**Working Platforms (PC)**

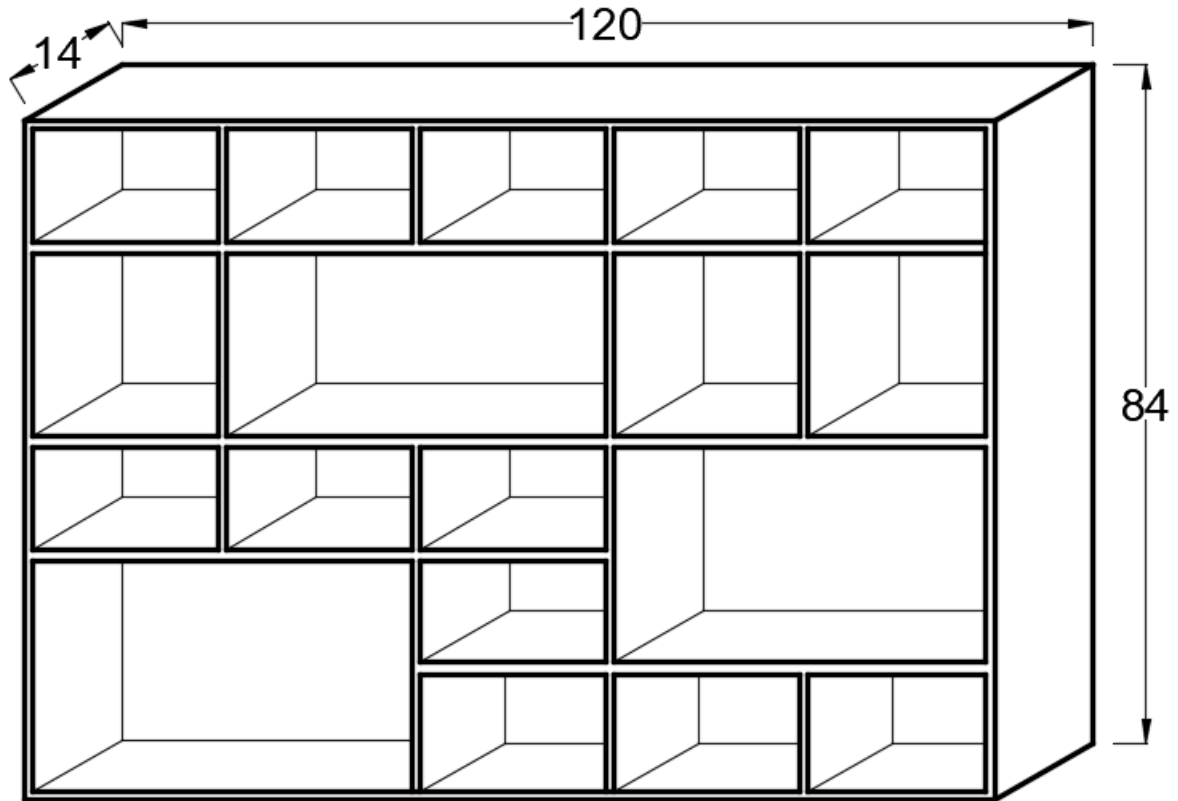
**[ 04 Numbers ]**



**Annexure 3**

**Book Shelves / Room Partitions**

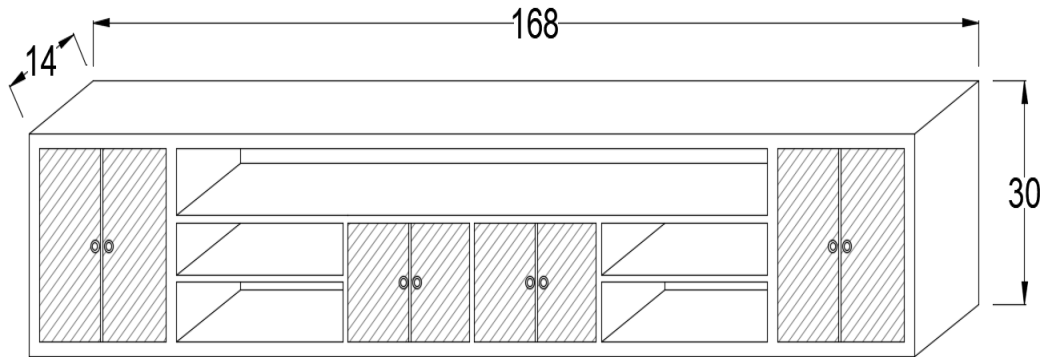
**[ 02 Numbers ]**



**Annexure 4**

**Digital Screen Platform with Drawers**

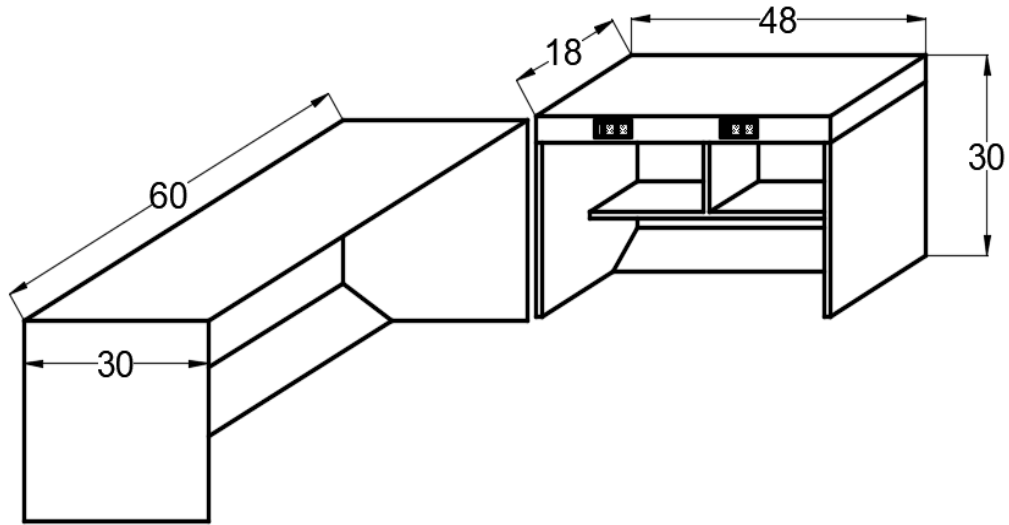
**[ 01 Number ]**



## Annexure 5

### Computer Table (L-Type)

[ 02 Number ]



The quotations must reach our office at the address given below latest by July 7, 2022.

**Address:**

Dr Purnendu Bose

Professor

Room No – WL-116, EEM Lab

Department of Civil Engineering

IIT Kanpur KANPUR – 208016

Uttar Pradesh Ph: 0512-259-7792